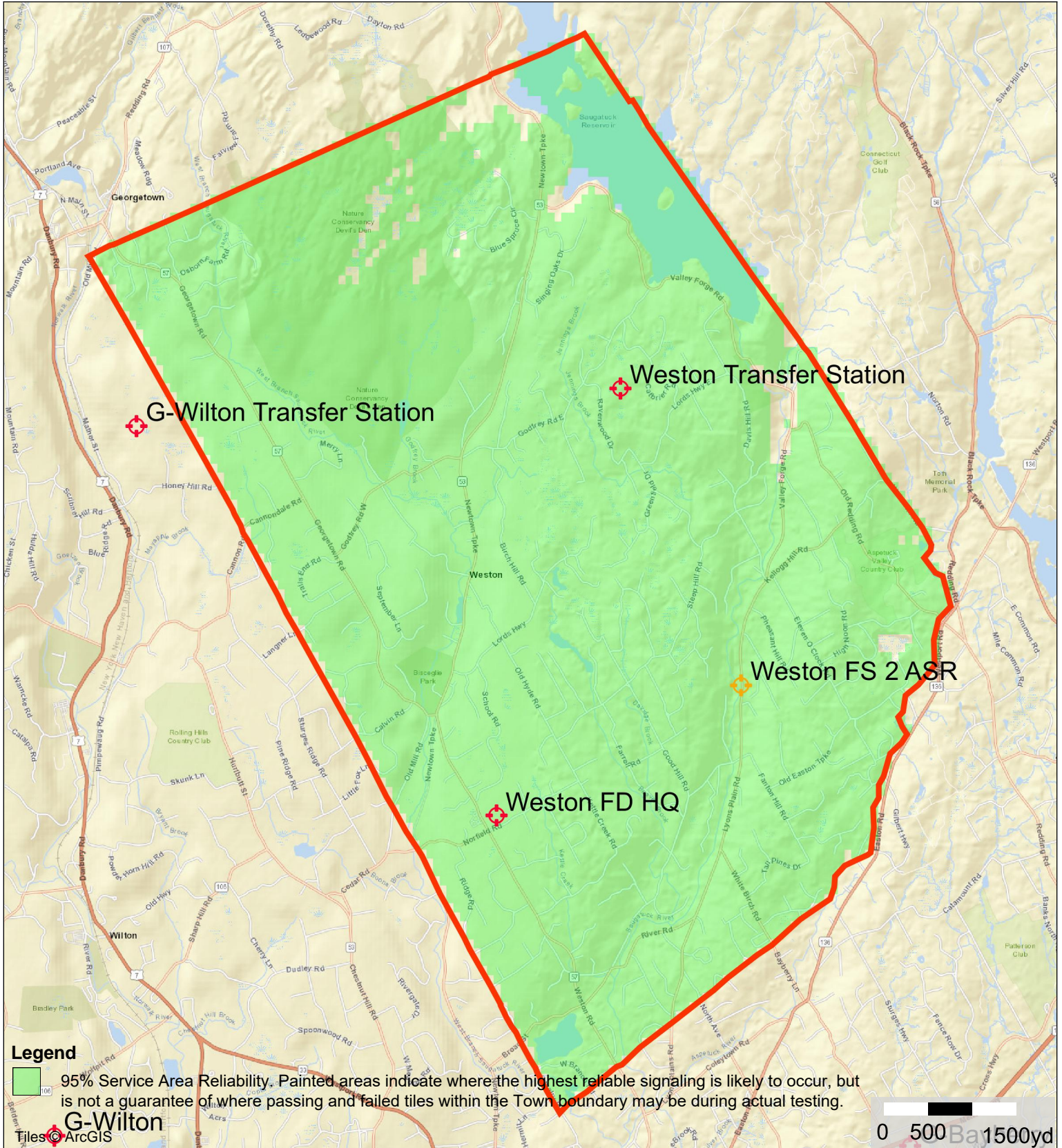




# TOWN OF WESTON, CT

**MOTOROLA SOLUTIONS**

CLMRN G 16-Site ASTRO 25 700/800 MHz TDMA Simulcast Subsystem w/Fire Headquarters and Transfer Station Add-On Simulcast Sites and Fire Station #2 Add-On ASR. Shaded Area Represents Roundtrip 95% Covered Area Reliability at DAQ 3.0.



Printed: 3/10/2023  
System version: 3.0.3.0

2.5 Watt APX 8000 Portable with an Additional 8 dB Loss applied for Building Penetration with the Standard XE All-Band Antenna in a Swivel Case on the Hip with a Remote Speaker Microphone for Transmit and Receive.

Solution: Weston, CT  
Project: CLMRN Simulcast Site Add-Ons  
Design: Design 45  
C13924

This map is intended solely for the equipment configuration stated above. Coverage can vary significantly if different configurations are used.

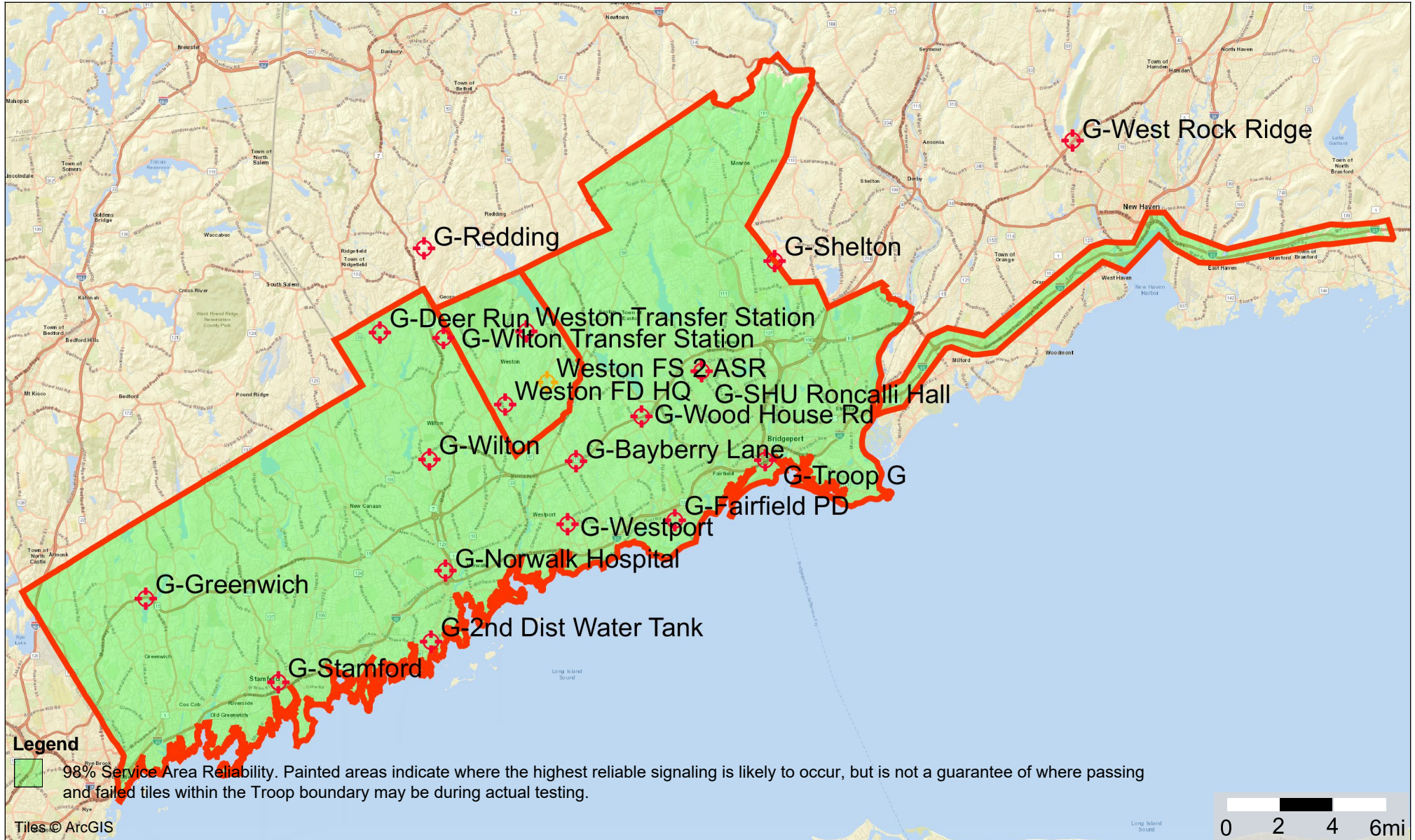
**REFERENCE 1**



MOTOROLA SOLUTIONS

# TOWN OF WESTON, CT

CLMRN G 16-Site ASTRO 25 700/800 MHz TDMA Simulcast Subsystem w/Fire Headquarters and Transfer Station Add-On Simulcast Sites and Fire Station #2 Add-On ASR. Shaded Area Represents Outbound 95% Covered Area Reliability at DAQ 3.0



Printed: 3/10/2023  
System version: 3.0.3.0

30W APX 6500 Mobile with a Center Roof Mount Antenna installed according to prescribed installation standards.

Solution: Weston, CT  
Project: CLMRN Simulcast Site Add-Ons  
Design: Design 48  
C13924

This map is intended solely for the equipment configuration stated above.  
Coverage can vary significantly if different configurations are used.

**REFERENCE 2**