

Date: January 5, 2023

RE: Permit to Cut and Remove Trees

Dear Tom Failla:

EVERSOURCE is working to improve reliability of service to its customers by clearing trees and brush surrounding the distribution lines throughout its system. We are required by law to obtain a written permit for such clearance from the tree warden of each town in which we work.

To facilitate this work, which is essential to reliable electric service in your town, EVERSOURCE requests you to issue a permit authorizing EVERSOURCE or its agent to cut and remove trees and brush within the limits of the public roads and grounds in the Town of Weston, Connecticut. For your convenience, we have included a permit form at the end of this letter. You can grant the permit by signing on the line provided below and returning it to us.

If before granting the necessary permit, you would like to discuss EVERSOURCE'S trimming activities in your community and any other questions you may have, we would be pleased to meet with you. We have found that our work goes most smoothly when there is cooperation between the Company and the town, and we will make every effort to accommodate your concerns.

If you would like to discuss EVERSOURCE's tree trimming program further, please call me at 203-241-7711.

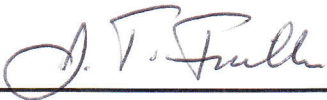
Sincerely,

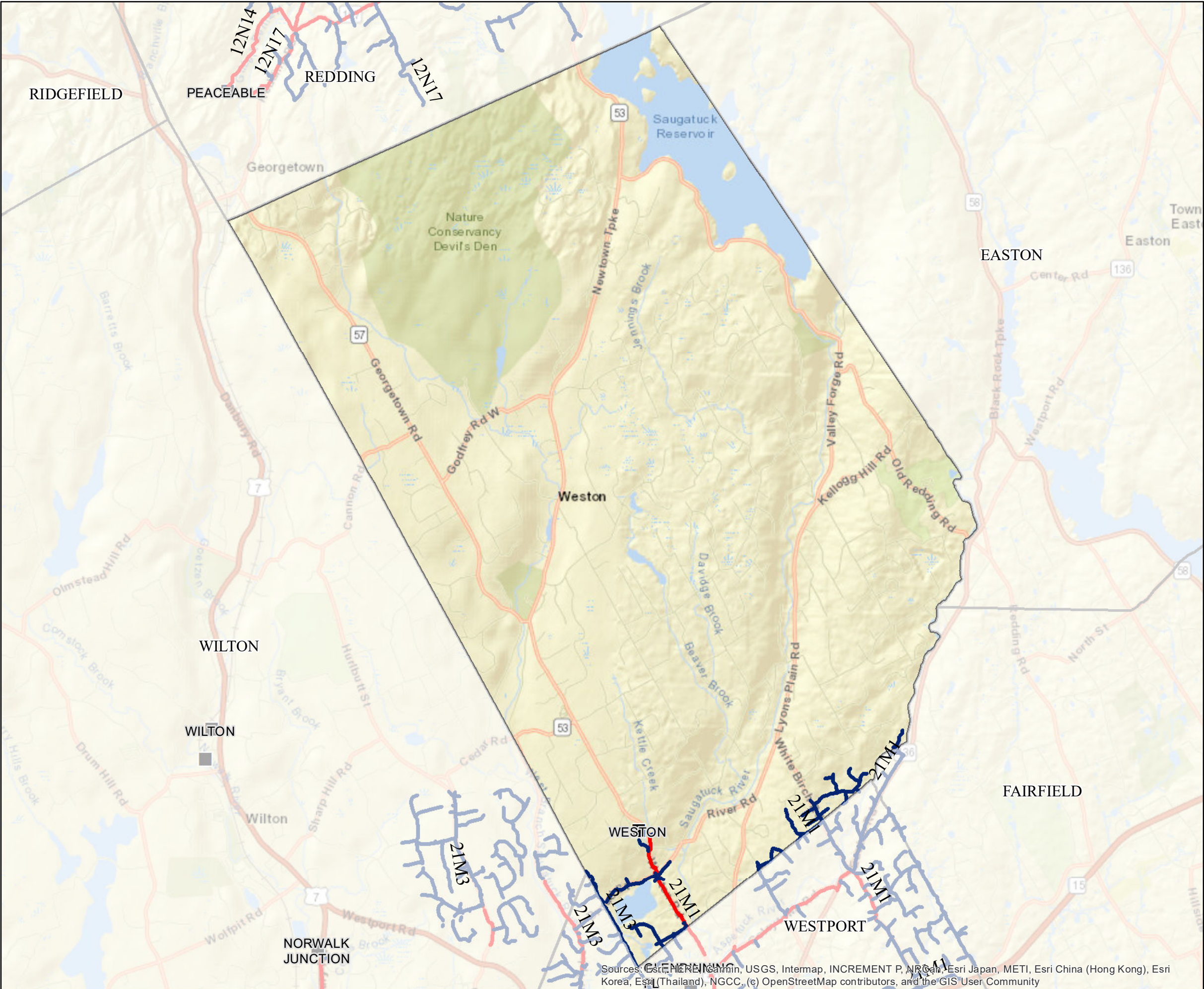
Samuel Berg
EVERSOURCE ARBORIST

EVERSOURCE

TOWN TREE TRIMMING PERMIT

I hereby grant a permit to cut or remove trees and brush in the Town of Weston, Connecticut in accordance with Connecticut General Statutes, Section 23-65.

By:  Date 1-8-23
WESTON, CT, Tree Warden



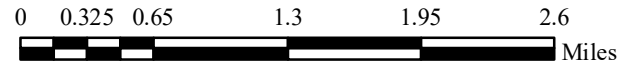
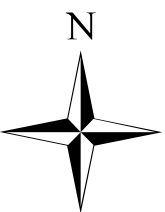
WESTON

OH Primary 2023 Trimming

- Backbone Maintenance Trimming
- Scheduled Maintenance Trimming
- Substations
- Town Boundary

Town Mileage Summary

<u>BB METT:</u>	<u>0.85</u>
<u>SMT:</u>	<u>4.54</u>
<u>Total:</u>	<u>5.39</u>



PROPRIETARY INFORMATION: The material contained on the Overhead Distribution Circuit Map shall be considered proprietary to Eversource (ES), and Users (which shall be defined as any person or entity who has received the Map through sale, purchase, exchange gift, or otherwise) shall keep it in confidence and shall not furnish or disclose it to any third party without the prior written permission of Eversource.

Date: 6/20/2022

Sources: Esri, HERE, Garmin, USGS, Intermap, INCREMENT P, NRCan, Esri Japan, METI, Esri China (Hong Kong), Esri Korea, Esri (Thailand), NGCC, (c) OpenStreetMap contributors, and the GIS User Community