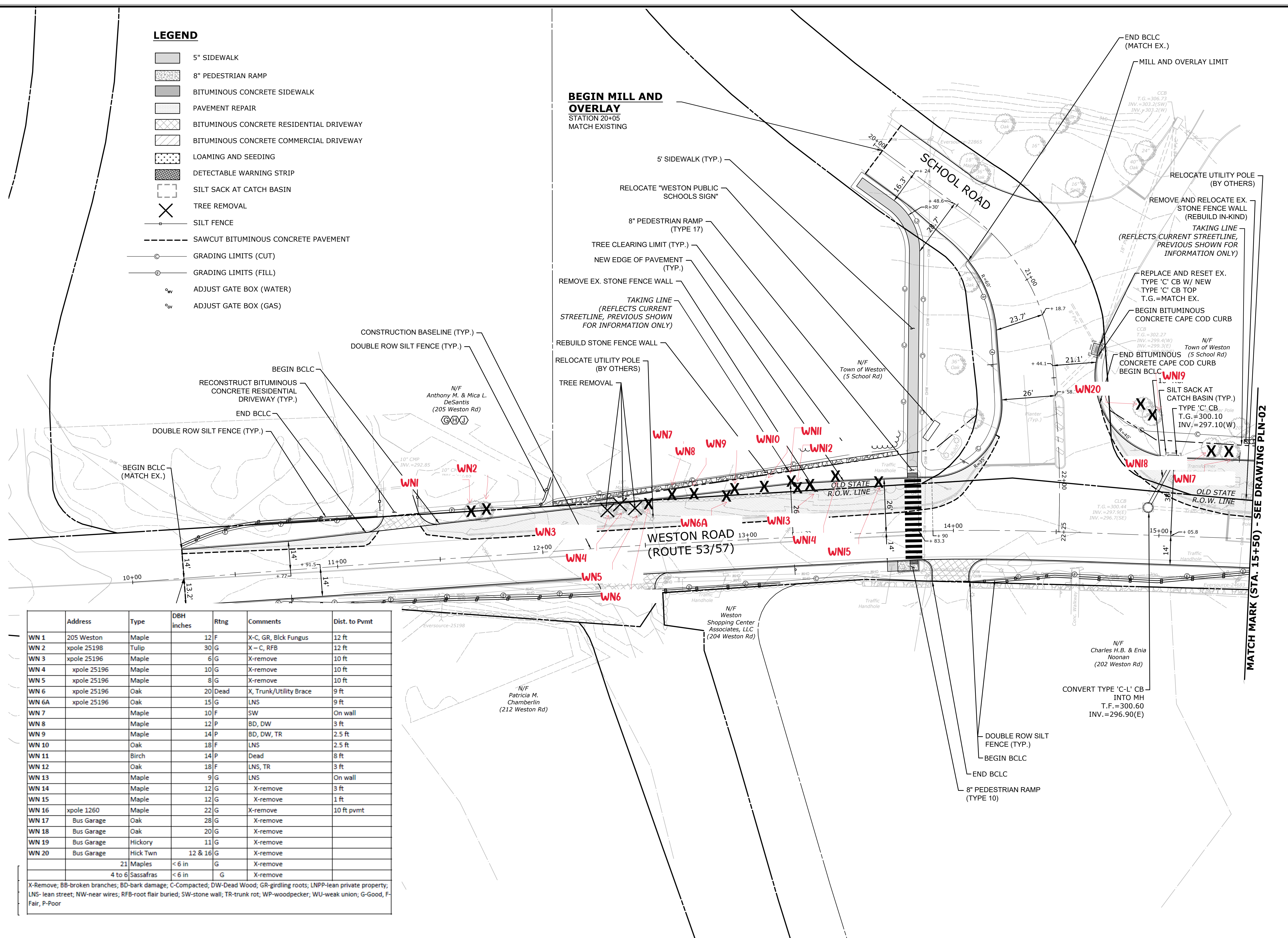


LEGEND

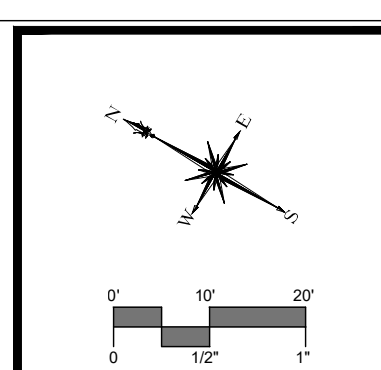
- 5" SIDEWALK
- 8" PEDESTRIAN RAMP
- BITUMINOUS CONCRETE SIDEWALK
- PAVEMENT REPAIR
- BITUMINOUS CONCRETE RESIDENTIAL DRIVEWAY
- BITUMINOUS CONCRETE COMMERCIAL DRIVEWAY
- LOAMING AND SEEDING
- DETECTABLE WARNING STRIP
- SILT SACK AT CATCH BASIN
- TREE REMOVAL
- SILT FENCE
- SAWCUT BITUMINOUS CONCRETE PAVEMENT
- GRADING LIMITS (CUT)
- GRADING LIMITS (FILL)
- ADJUST GATE BOX (WATER)
- ADJUST GATE BOX (GAS)

BEGIN MILL AND OVERLAY
STATION 20+05
MATCH EXISTING



	Address	Type	DBH inches	Rtng	Comments	Dist. to Pvmt
WN 1	205 Weston	Maple		12 F	X-C, GR, Blck Fungus	12 ft
WN 2	xpole 25198	Tulip		30 G	X - C, RFB	12 ft
WN 3	xpole 25198	Maple		6 G	X-remove	10 ft
WN 4	xpole 25196	Maple		10 G	X-remove	10 ft
WN 5	xpole 25196	Maple		8 G	X-remove	10 ft
WN 6	xpole 25196	Oak		20 Dead	X, Trunk/Utility Brace	9 ft
WN 6A	xpole 25196	Oak		15 G	LNS	9 ft
WN 7		Maple		10 F	SW	On wall
WN 8		Maple		12 P	BD, DW	3 ft
WN 9		Maple		14 P	BD, DW, TR	2.5 ft
WN 10		Oak		18 F	LNS	2.5 ft
WN 11		Birch		14 P	Dead	8 ft
WN 12		Oak		18 F	LNS, TR	3 ft
WN 13		Maple		9 G	LNS	On wall
WN 14		Maple		12 G	X-remove	3 ft
WN 15		Maple		12 G	X-remove	1 ft
WN 16	xpole 1260	Maple		22 G	X-remove	10 ft pvmt
WN 17	Bus Garage	Oak		28 G	X-remove	
WN 18	Bus Garage	Oak		20 G	X-remove	
WN 19	Bus Garage	Hickory		11 G	X-remove	
WN 20	Bus Garage	Hick Tw		12 & 16 G	X-remove	
	21 Maples	< 6 in		G	X-remove	
	4 to 6 Sassafras	< 6 in		G	X-remove	

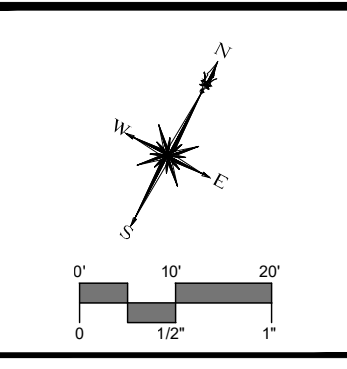
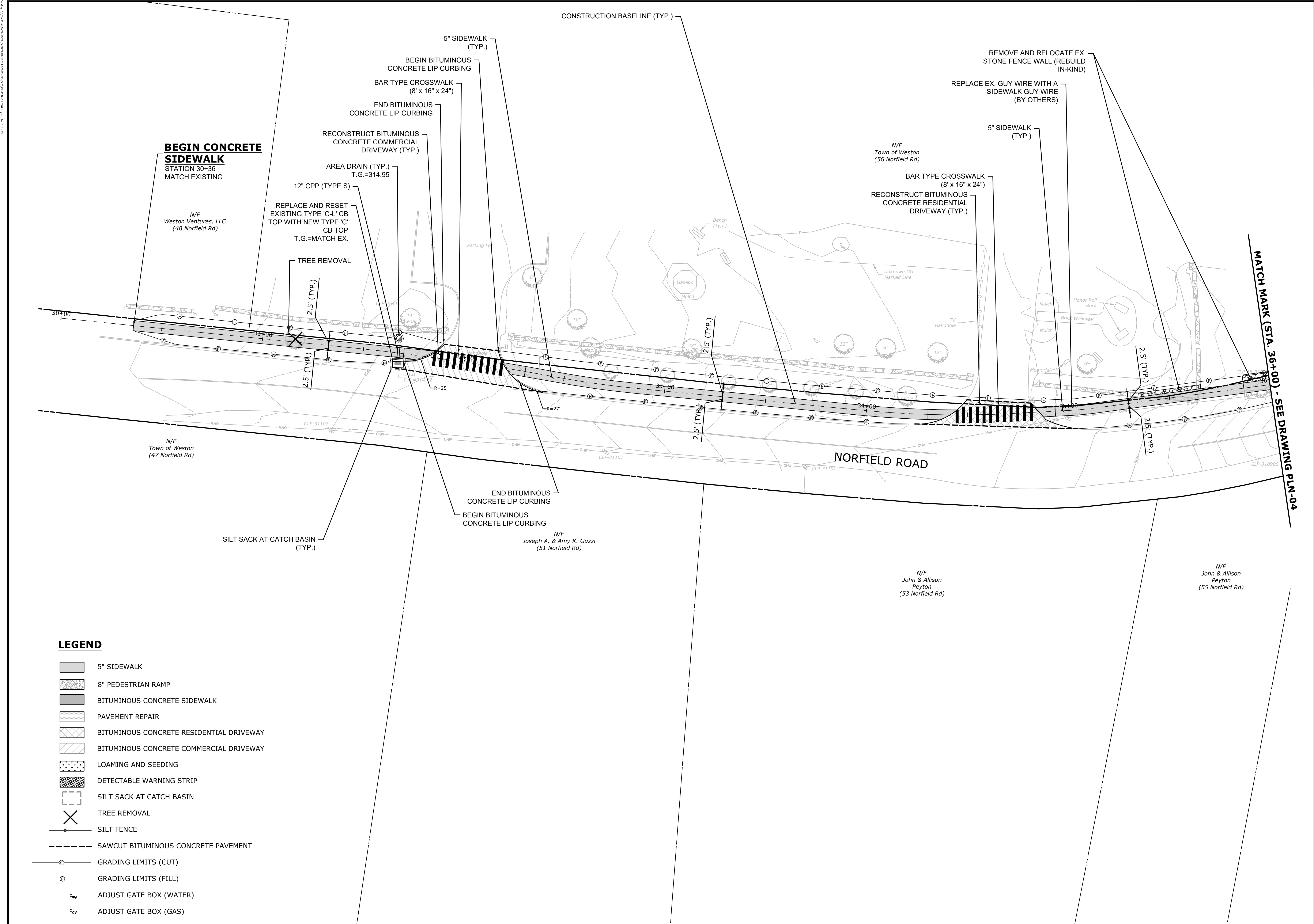
X-Remove; BB-broken branches; BD-bark damage; C-Compacted; DW-Dead Wood; GR-girdling roots; LNPP-lean private property; LNS- lean street; NW-near wires; RFB-root flair buried; SW-stone wall; TR-trunk rot; WP-woodpecker; WU-weak union; G-Good, F-Fair, P-Poor



DESCRIPTION	DATE	BY

ROADWAY PLANS
TOWN CENTER & PEDESTRIAN SAFETY IMPROVEMENTS
LOT/CIP PROJECT L157-0001
WESTON ROAD, SCHOOL ROAD, NORFIELD ROAD, AND LORDS HIGHWAY
WESTON, CONNECTICUT

TS	CJC	PD
DESIGNED	DRAWN	CHECKED
SCALE: 1"=20'		
DATE: MAY 31, 2024		
PROJECT NO: 141.11811.00022		
DRAWING NO: PLN-01		



0 10 20
0 10 20



DESCRIPTION	DATE	BY

SIDEWALK PLANS
TOWN CENTER & PEDESTRIAN SAFETY IMPROVEMENTS
LOT/CIP PROJECT L157-0001
 WESTON ROAD, SCHOOL ROAD, NORFIELD ROAD, AND LORDS HIGHWAY
 WESTON, CONNECTICUT

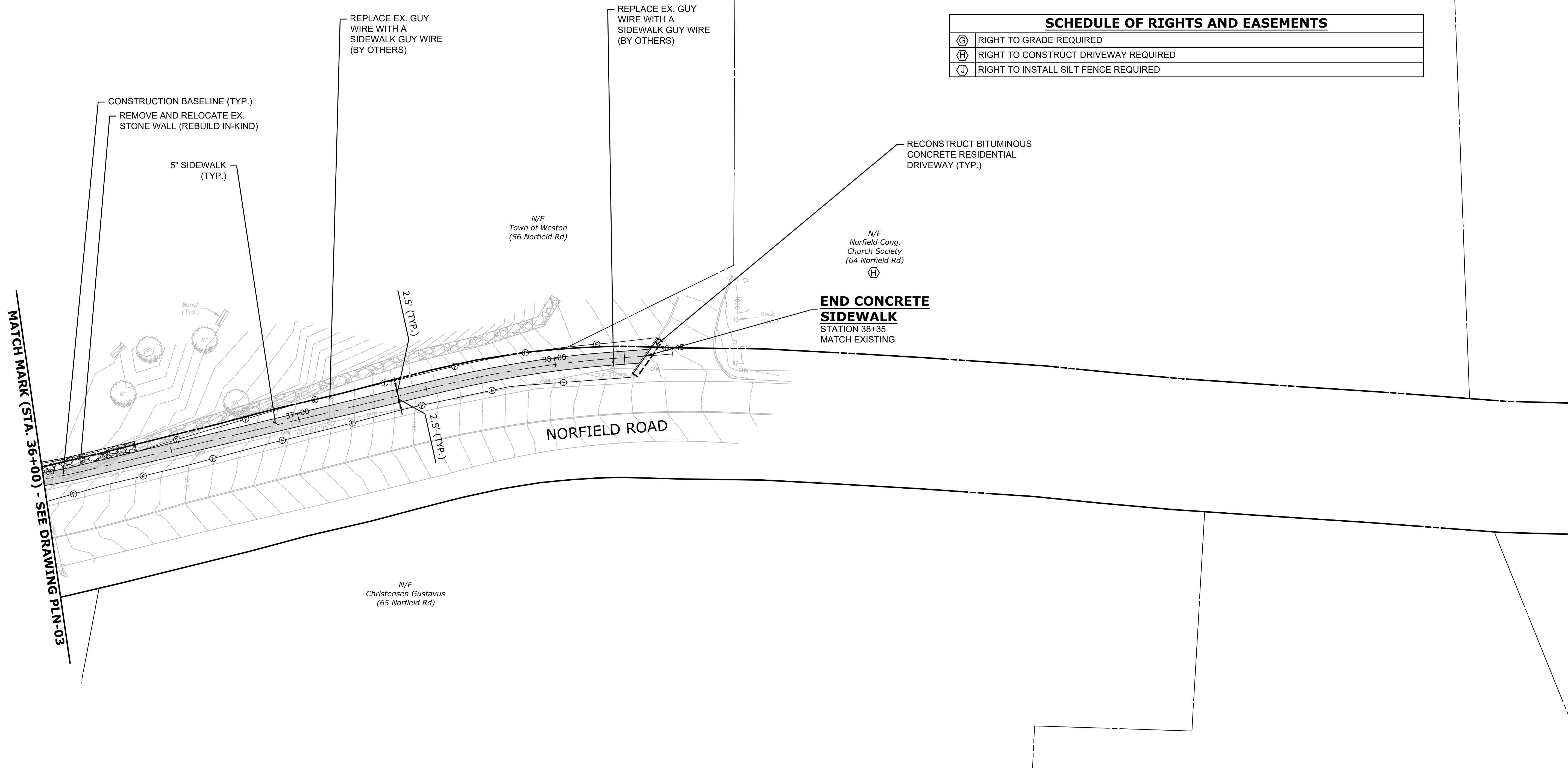
TS	CJC	PD
DESIGNED	DRAWN	CHECKED

SCALE: 1"=20'
 DATE: MAY 31, 2024
 PROJECT NO: 141.11811.00022
 DRAWING NO: PLN-03

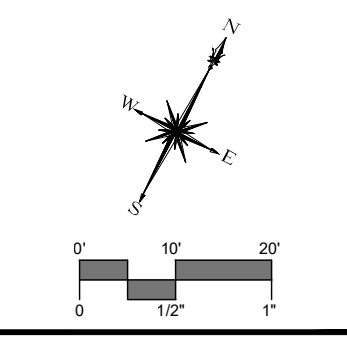
33

- LEGEND**
- 5" SIDEWALK
 - 8" PEDESTRIAN RAMP
 - BITUMINOUS CONCRETE SIDEWALK
 - PAVEMENT REPAIR
 - BITUMINOUS CONCRETE RESIDENTIAL DRIVEWAY
 - BITUMINOUS CONCRETE COMMERCIAL DRIVEWAY
 - LOAMING AND SEEDING
 - DETECTABLE WARNING STRIP
 - SILT SACK AT CATCH BASIN
 - TREE REMOVAL
 - SILT FENCE
 - SAWCUT BITUMINOUS CONCRETE PAVEMENT
 - GRADING LIMITS (CUT)
 - GRADING LIMITS (FILL)
 - ADJUST GATE BOX (WATER)
 - ADJUST GATE BOX (GAS)

ALL RIGHTS RESERVED. NO PART OF THIS DOCUMENT IS TO BE REPRODUCED OR TRANSMITTED IN ANY FORM OR BY ANY MEANS, ELECTRONIC OR MECHANICAL, INCLUDING PHOTOCOPYING, RECORDING, OR BY ANY INFORMATION STORAGE AND RETRIEVAL SYSTEM, WITHOUT THE WRITTEN PERMISSION OF SLR CONSULTING.



SCHEDULE OF RIGHTS AND EASEMENTS	
(G)	RIGHT TO GRADE REQUIRED
(H)	RIGHT TO CONSTRUCT DRIVEWAY REQUIRED
(I)	RIGHT TO INSTALL SILT FENCE REQUIRED



DESCRIPTION	DATE	BY

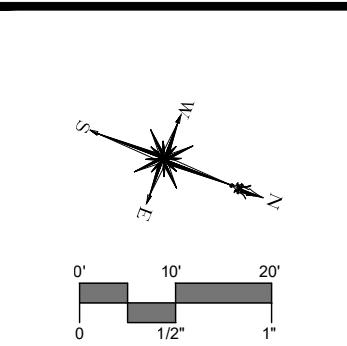
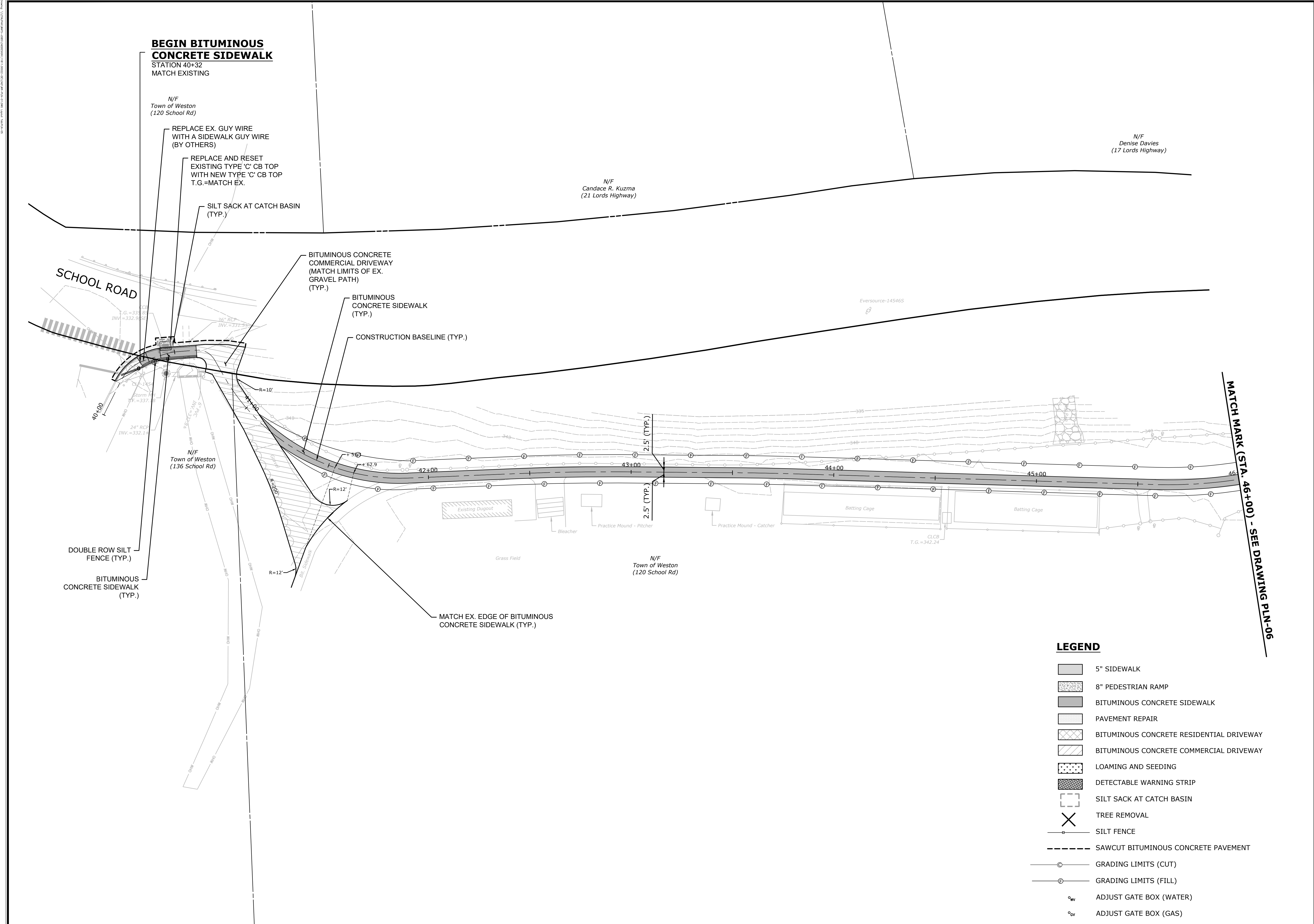
- LEGEND**
- 5" SIDEWALK
 - 8" PEDESTRIAN RAMP
 - BITUMINOUS CONCRETE SIDEWALK
 - PAVEMENT REPAIR
 - BITUMINOUS CONCRETE RESIDENTIAL DRIVEWAY
 - BITUMINOUS CONCRETE COMMERCIAL DRIVEWAY
 - LOAMING AND SEEDING
 - DETECTABLE WARNING STRIP
 - SILT SACK AT CATCH BASIN
 - TREE REMOVAL
 - SILT FENCE
 - SAWCUT BITUMINOUS CONCRETE PAVEMENT
 - GRADING LIMITS (CUT)
 - GRADING LIMITS (FILL)
 - ADJUST GATE BOX (WATER)
 - ADJUST GATE BOX (GAS)

SIDEWALK PLANS
 TOWN CENTER & PEDESTRIAN SAFETY IMPROVEMENTS
 LOTCIP PROJECT L157-0001
 WESTON ROAD, SCHOOL ROAD, NORFIELD ROAD, AND LORDS HIGHWAY
 WESTON, CONNECTICUT

TS	CJC	PD
DESIGNED	DRAWN	CHECKED
1"=20'		
DATE MAY 31, 2024		
PROJECT NO. 141.11811.00022		
DRAWING NO. PLN-04		

34

SHEET NO.



SLR
 96 REALTY DRIVE
 WESTON, CT 06893
 203.271.1773
 SLRCONSULTING.COM

DESCRIPTION	DATE	BY

SIDEWALK PLANS
TOWN CENTER & PEDESTRIAN SAFETY IMPROVEMENTS
LOT/CIP PROJECT L157-0001
 WESTON ROAD, SCHOOL ROAD, NORFIELD ROAD, AND LORDS HIGHWAY
 WESTON, CONNECTICUT


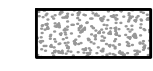









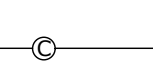
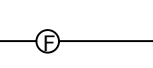
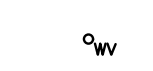
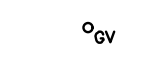

TS	CJC	PD
DESIGNED	DRAWN	CHECKED

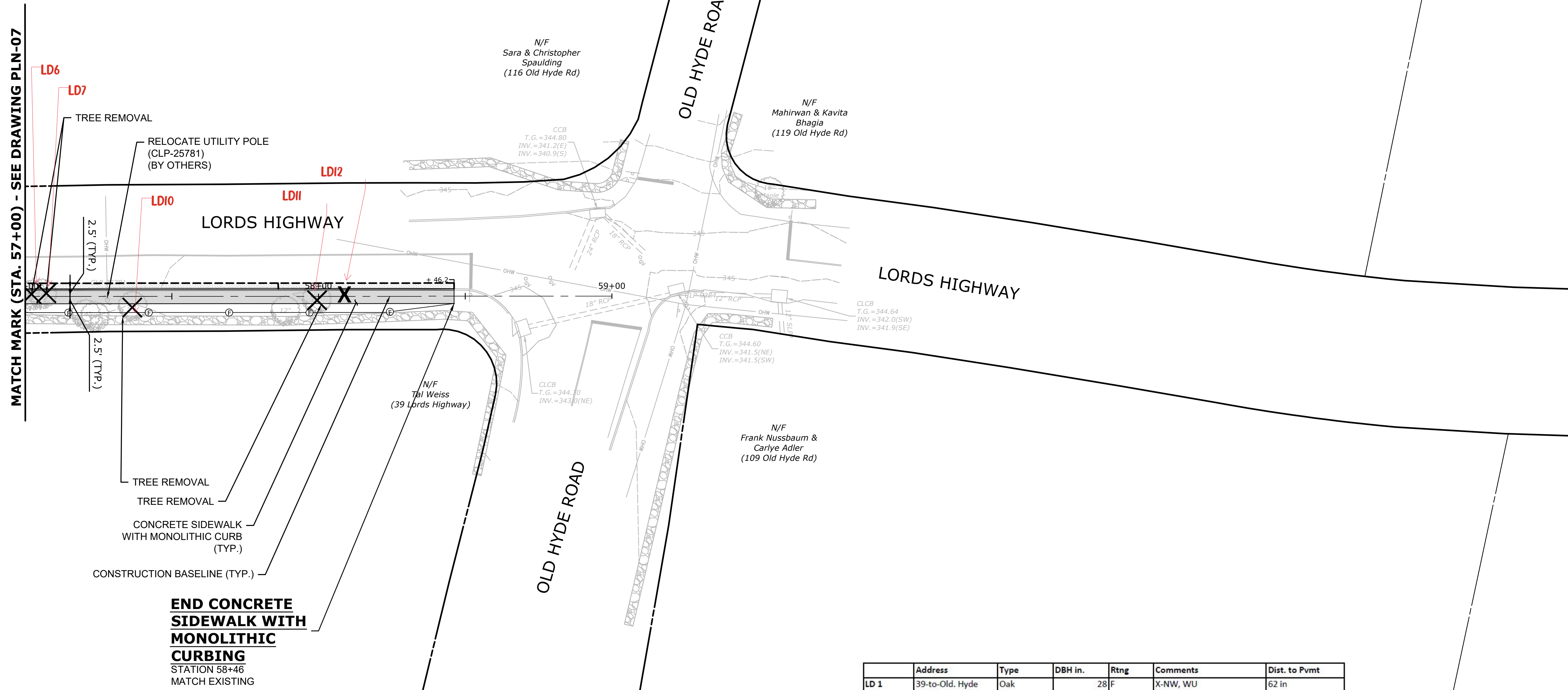
SCALE: 1"=20'
 DATE: MAY 31, 2024
 PROJECT NO: 141.11811.00022
 DRAWING NO: PLN-05

35

- LEGEND**
- 5" SIDEWALK
 - 8" PEDESTRIAN RAMP
 - BITUMINOUS CONCRETE SIDEWALK
 - PAVEMENT REPAIR
 - BITUMINOUS CONCRETE RESIDENTIAL DRIVEWAY
 - BITUMINOUS CONCRETE COMMERCIAL DRIVEWAY
 - LOAMING AND SEEDING
 - DETECTABLE WARNING STRIP
 - SILT SACK AT CATCH BASIN
 - TREE REMOVAL
 - SILT FENCE
 - SAWCUT BITUMINOUS CONCRETE PAVEMENT
 - GRADING LIMITS (CUT)
 - GRADING LIMITS (FILL)
 - ADJUST GATE BOX (WATER)
 - ADJUST GATE BOX (GAS)

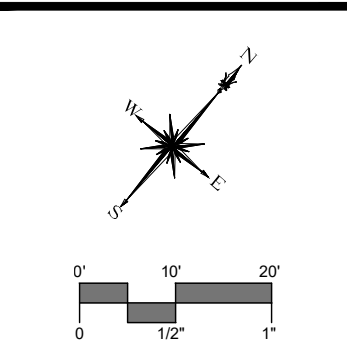
LEGEND

-  5" SIDEWALK
-  8" PEDESTRIAN RAMP
-  BITUMINOUS CONCRETE SIDEWALK
-  PAVEMENT REPAIR
-  BITUMINOUS CONCRETE RESIDENTIAL DRIVEWAY
-  BITUMINOUS CONCRETE COMMERCIAL DRIVEWAY
-  LOAMING AND SEEDING
-  DETECTABLE WARNING STRIP
-  SILT SACK AT CATCH BASIN
-  TREE REMOVAL
-  SILT FENCE
-  SAWCUT BITUMINOUS CONCRETE PAVEMENT
-  GRADING LIMITS (CUT)
-  GRADING LIMITS (FILL)
-  ADJUST GATE BOX (WATER)
-  ADJUST GATE BOX (GAS)



LD #	Address	Type	DBH in.	Rtng	Comments	Dist. to Pvmt
LD 1	39-to-Old Hyde	Oak		28 F	X-NW, WU	62 in
LD 4	39-to-Old Hyde	Oak		19 F	X-C, DW, LNPP, WU	80 in
LD 5	39-to-Old Hyde	Oak		38 F	X-C, LNPP, BB, SW	60 in
LD 6	39-to-Old Hyde	Oak Twn		36 F	X-BD, C, WU	9 in
LD 7	39-to-Old Hyde	Maple		8 P	X-C, WP	8 in
LD 10	Pole 25781	Hickory		15 F	X-GR, TR	72 in
LD 11	39-to-Old Hyde	Birch		12 P	X-LNS, TR	80 in
LD 12	39-to-Old Hyde	Hickory		15 F	X-C	30 in

X-Remove; BB-broken branches; BD-bark damage; C-Compacted; DW-Dead Wood; GR-girdling roots; LNPP-lean private property; L wires; RFB-root flair buried; SW-stone wall; TR-trunk rot; WP-woodpecker; WU-weak union; G-Good, F-Fair, P-Poor



DESCRIPTION	DATE	BY

SIDEWALK PLANS
TOWN CENTER & PEDESTRIAN SAFETY IMPROVEMENTS
LOT/CP PROJECT L157-0001
WESTON ROAD, SCHOOL ROAD, NORFIELD ROAD, AND LORDS HIGHWAY
WESTON, CONNECTICUT

TS	CJC	PD
DESIGNED	DRAWN	CHECKED

SCALE: **1"=20'**

DATE: **MAY 31, 2024**

PROJECT NO.: **141.11811.00022**

DRAWING NO.: **PLN-08**

SHEET NO.: **38**