



Ernst Conservation Seeds
 8884 Mercor Pike
 Meadville, PA 16335
 (800) 873-3321 Fax (814) 336-5191
www.ernstseed.com

Date: February 29, 2024

Partially Shaded Area Roadside Mix - ERNMX-140

Botanical Name	Common Name	Price/Lb
49.40 % <i>Schizachyrium scoparium</i> , Fort Indiantown Gap-PA Ecotype	Little Bluestem, Fort Indiantown Gap-PA Ecotype	14.61
18.50 % <i>Elymus virginicus</i> , Madison-NY Ecotype	Virginia Wildrye, Madison-NY Ecotype	10.45
9.50 % <i>Echinacea purpurea</i>	Purple Coneflower	43.20
6.50 % <i>Elymus hystrix</i> , PA Ecotype	Bobwhite Grass, PA Ecotype	33.29
3.00 % <i>Rudbeckia hirta</i>	Blackeyed Susan	31.20
2.00 % <i>Chamaecrista fasciculata</i> , PA Ecotype	Partridge Pea, PA Ecotype	12.00
1.80 % <i>Halepisis helianthoides</i> , PA Ecotype	Oxeye Sunflower, PA Ecotype	33.60
1.00 % <i>Penstemon digitalis</i>	Tall White Beardtongue	168.00
1.00 % <i>Zizia aurea</i> , PA Ecotype	Golden Alexanders, PA Ecotype	72.00
0.70 % <i>Liatris spicata</i>	Marsh Blazing Star	252.00
0.60 % <i>Aster macrophyllus</i> , PA Ecotype	Bigleaf Aster, PA Ecotype	336.00
0.60 % <i>Baptisia australis</i> , Southern WV Ecotype	Blue False Indigo, Southern WV Ecotype	96.00
0.50 % <i>Anemone canadensis</i> , PA Ecotype	Canadian Anemone, PA Ecotype	456.00
0.50 % <i>Gaura biennis</i>	Biennial Beeblossom	151.20
0.50 % <i>Lespedeza capitata</i> , RI Ecotype	Rounded Lespedeza, RI Ecotype	115.20
0.50 % <i>Rudbeckia triloba</i> , WV Ecotype	Brown-eyed Susan, WV Ecotype	57.60
0.40 % <i>Asclepias tuberosa</i> , PA Ecotype	Butterfly Milkweed, PA Ecotype	312.00
0.40 % <i>Aster pilosus</i> , PA Ecotype	Heath Aster, PA Ecotype	264.00
0.30 % <i>Asclepias syriaca</i> , PA Ecotype	Common Milkweed, PA Ecotype	96.00
0.30 % <i>Monarda fistulosa</i>	Wild Bergamot	96.00
0.30 % <i>Pycnanthemum incanum</i> , MD Ecotype	Hoary Mountainmint, MD Ecotype	432.00
0.30 % <i>Solidago bicolor</i> , PA Ecotype	White Goldenrod, PA Ecotype	240.00
0.30 % <i>Solidago nemoralis</i> , PA Ecotype	Gray Goldenrod, PA Ecotype	264.00
0.30 % <i>Tradescantia ohiensis</i> , PA Ecotype	Ohio Spiderwort, PA Ecotype	252.00
0.20 % <i>Aquilegia canadensis</i>	Eastern Columbine	384.00
0.20 % <i>Aster prenanthoides</i> , PA Ecotype	Zigzag Aster, PA Ecotype	432.00
0.20 % <i>Solidago juncea</i> , PA Ecotype	Early Goldenrod, PA Ecotype	336.00
0.10 % <i>Penstemon hirsutus</i>	Hairy Beardtongue	480.00
0.10 % <i>Penstemon laevigatus</i> , PA Ecotype	Appalachian Beardtongue, PA Ecotype	336.00
100.00 %	Mix Price/Lb Bulk:	\$37.42

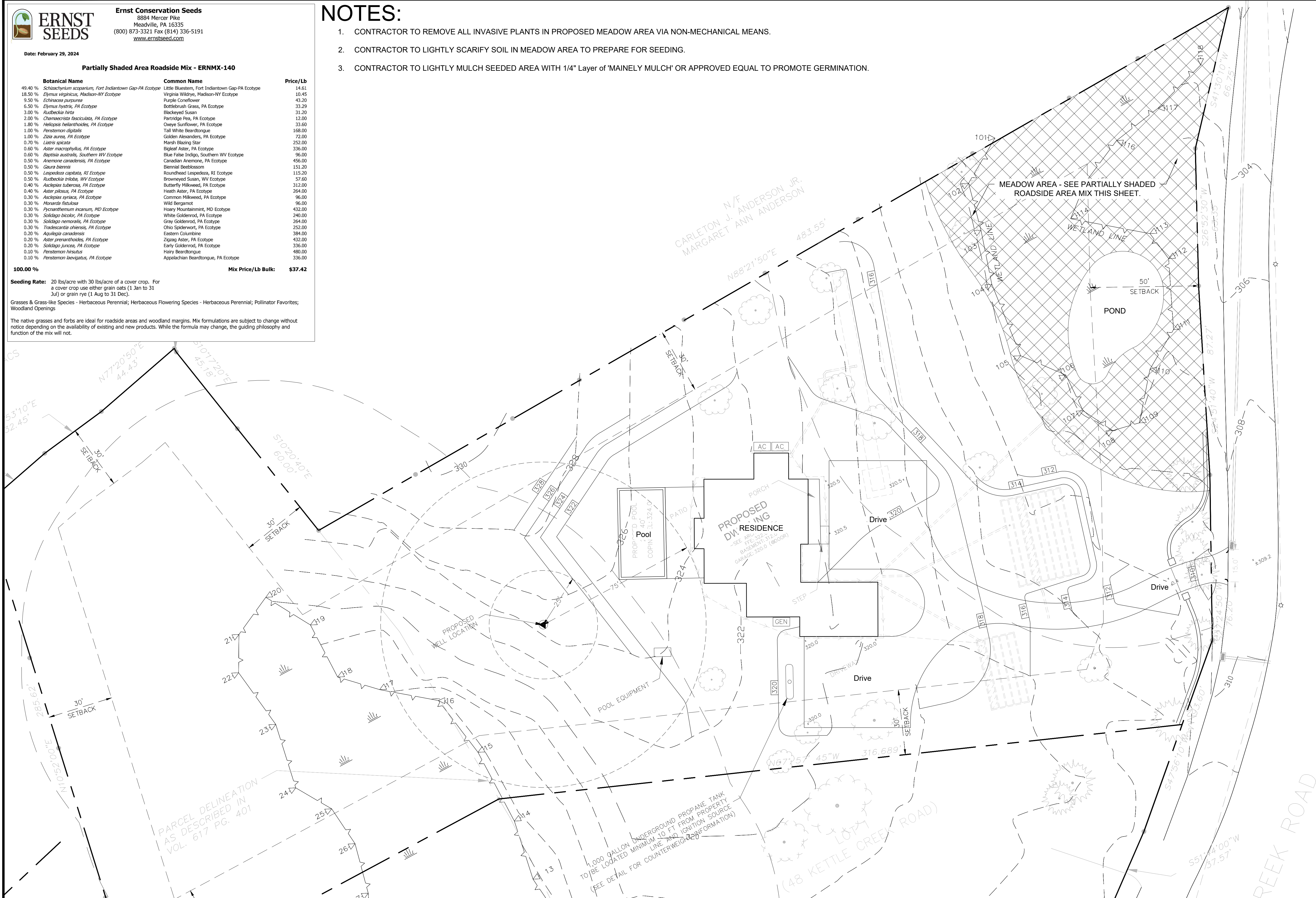
Seeding Rate: 20 lbs/acre with 30 lbs/acre of a cover crop. For a cover crop use either grain oats (1 Jan to 31 Jul) or grain rye (1 Aug to 31 Dec).

Grasses & Grass-like Species - Herbaceous Perennial; Herbaceous Flowering Species - Herbaceous Perennial; Pollinator Favorites; Woodland Openings

The native grasses and forbs are ideal for roadside areas and woodland margins. Mix formulations are subject to change without notice depending on the availability of existing and new products. While the formula may change, the guiding philosophy and function of the mix will not.

NOTES:

1. CONTRACTOR TO REMOVE ALL INVASIVE PLANTS IN PROPOSED MEADOW AREA VIA NON-MECHANICAL MEANS.
2. CONTRACTOR TO LIGHTLY SCARIFY SOIL IN MEADOW AREA TO PREPARE FOR SEEDING.
3. CONTRACTOR TO LIGHTLY MULCH SEEDED AREA WITH 1/4" Layer of 'MAINELY MULCH' OR APPROVED EQUAL TO PROMOTE GERMINATION.



ECKERSON DESIGN ASSOCIATES
 LANDSCAPE ARCHITECTURE
 21 Ann Street Unit AC1
 South Norwalk, CT 06854
 office: 203.212.3679
www.eckersondesignassociates.com

SITE PLAN
50 Kettle Creek Road

Weston, CT

